



## Lindie Gardens, Uxbridge, UB8 1GR

- EPC Rating - B
- One Parking Space Included
- Families Welcome
- Two Bathrooms
- Well Presented
- Furnished
- Available Now
- Fantastic Location
- Ground Floor
- Repainted

**£1,650 PCM**



Cameron Estate Agents  
195 High Street,  
Middlesex, Uxbridge, UB8 1LB

E: [uxbridge@cameron.co](mailto:uxbridge@cameron.co)  
T: 01895252000

[www.cameron.co](http://www.cameron.co)

Whilst every care has been taken to ensure the accuracy of these particulars, none of the statements contained herein are to be relied upon as representations of fact. These particulars do not constitute an offer or contract.

**Description**

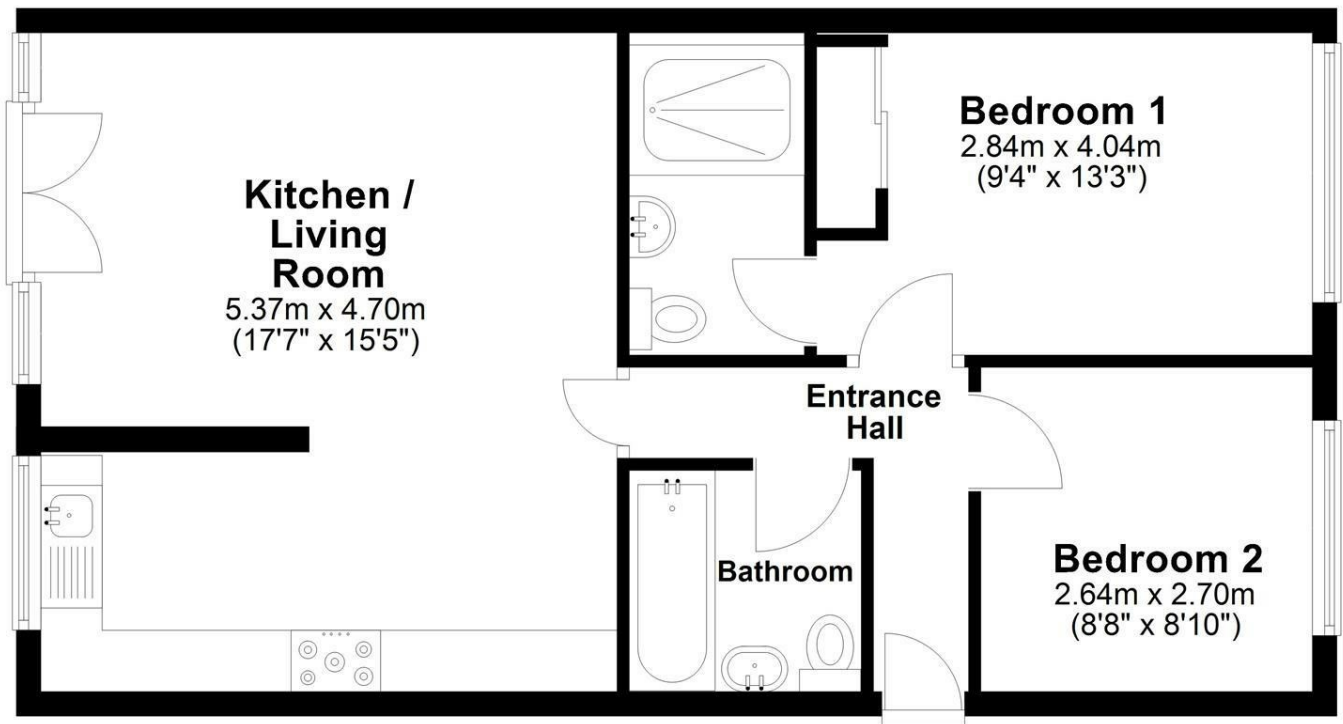
A two bedroom, ground floor apartment located walking distance to Uxbridge Town. Accommodation comprises entrance hall, living room, kitchen/breakfast room, two double bedrooms (master with en-suite shower room) and bathroom. The property benefits from double glazing, allocated parking and secure entry phone system. Ideally located to local schooling and within walking distance to Uxbridge Town centre with its range of day to day shops, bars, restaurants & Uxbridge Station. Suitable for a small family or sharers, available to move in Mid August 2025, presented furnished.

**IMPORTANT NOTICE**

These particulars have been prepared upon information supplied by the Vendor and should be verified by your surveyors and solicitors. In accordance with the Property Misdescriptions Act 1991 we have prepared these sales particulars as a general guide to give a broad description of the property. They are not intended to constitute part of an offer or contract. We have not carried out a structural survey and the services, appliances and specific fittings have not been tested. All photographs, measurements, floor plans and distances referred to are given as a guide only and should not be relied upon for the purchase of carpets or any other fixtures or fittings. Lease details service charge and ground rent (where applicable) are given as a guide only and should be checked and confirmed by your solicitor prior to exchange of contract

## Ground Floor

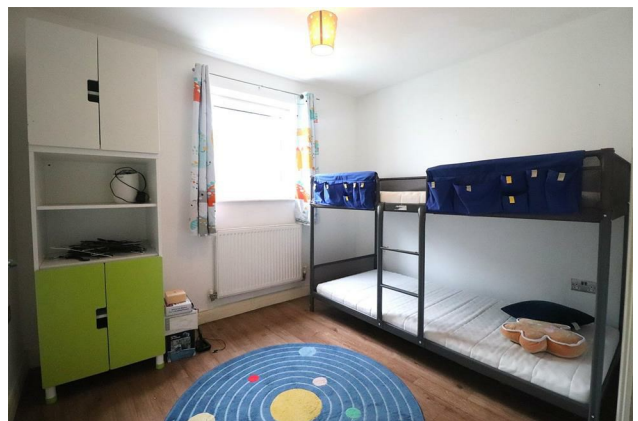
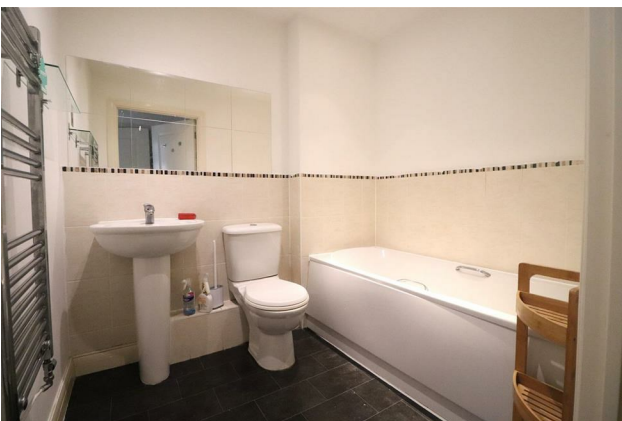
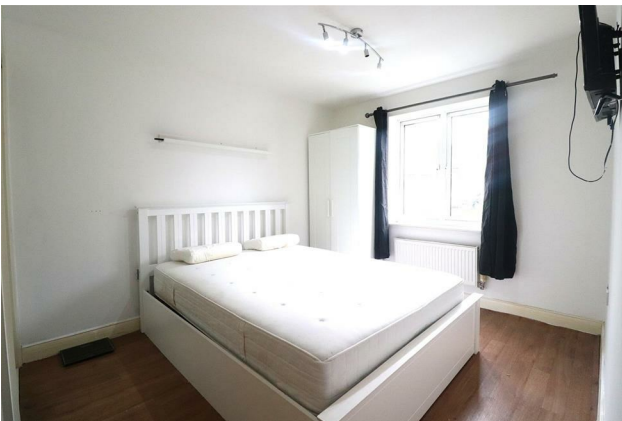
Approx. 56.6 sq. metres (608.8 sq. feet)



Total area: approx. 56.6 sq. metres (608.8 sq. feet)



# Cameron



Whilst every care has been taken to ensure the accuracy of these particulars, none of the statements contained herein are to be relied upon as representations of fact. These particulars do not constitute an offer or contract.